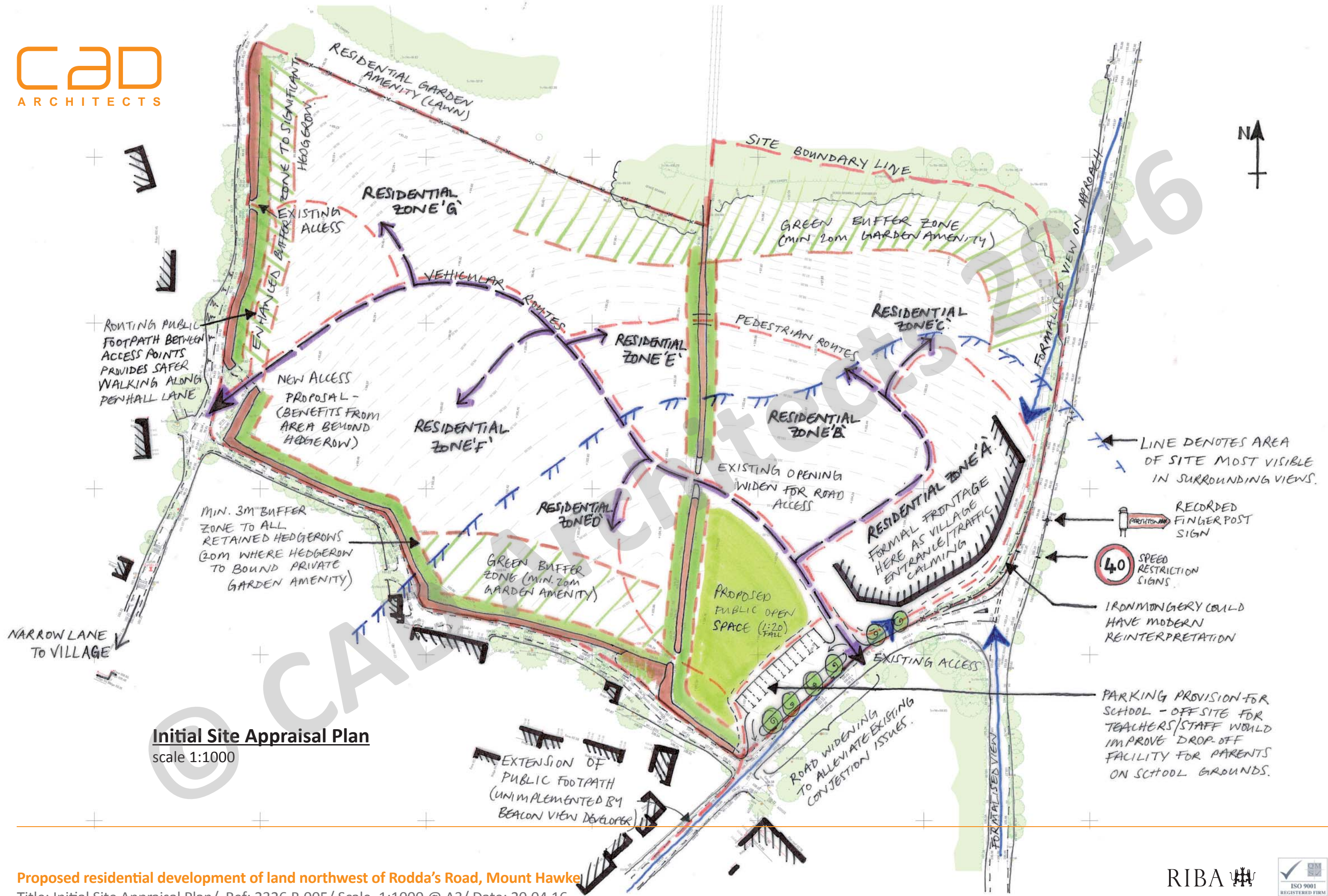


First Public Consultation

- Initial Site Appraisal Plan
- Site Analysis - Village Approach
- Site Analysis - Site Views

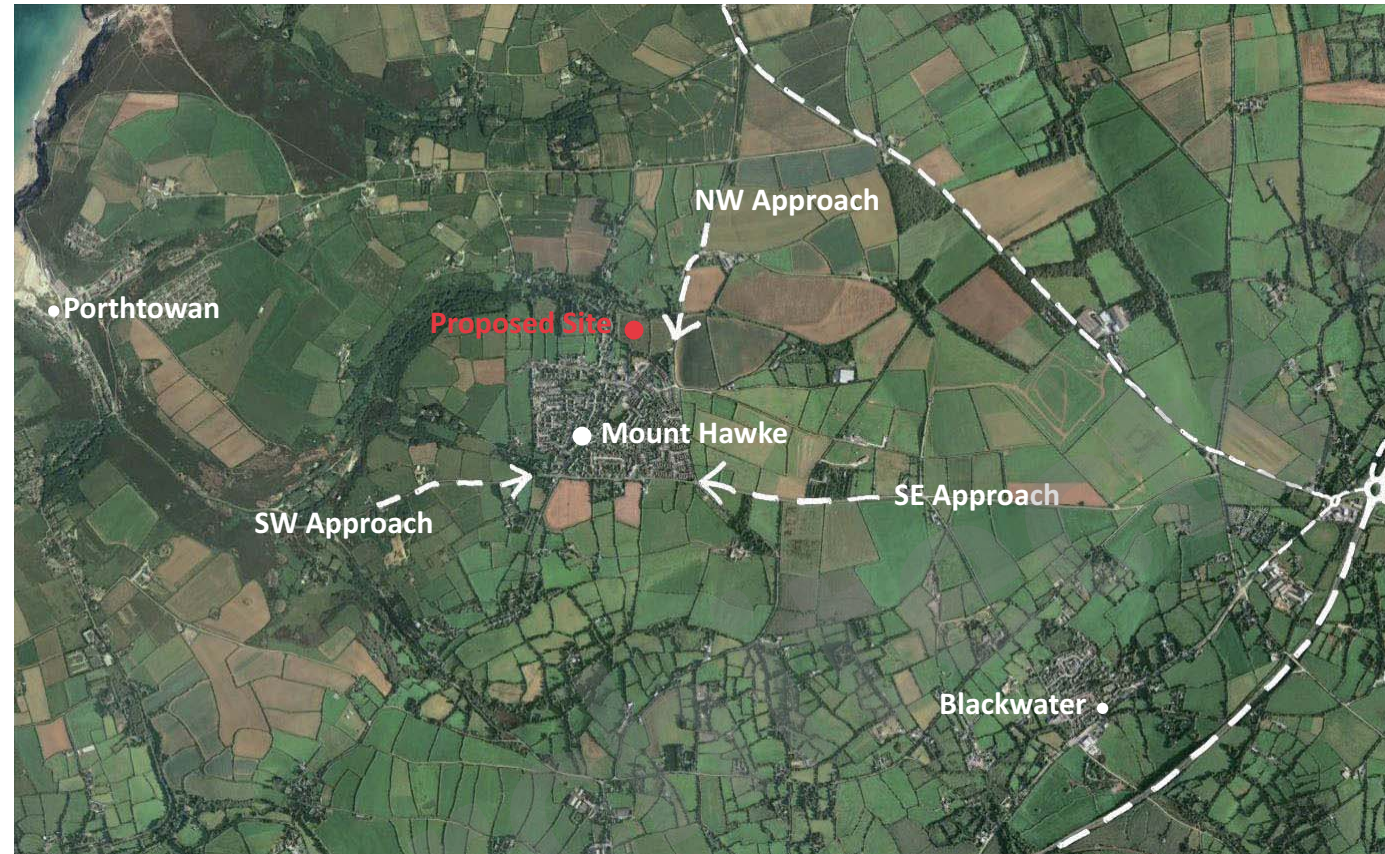


ANALYSIS OF VILLAGE APPROACH

The village is encompassed by a series of bounding roads which appear to isolate the village.

Without any formal frontages on these roadways Mount Hawke is easily bypassed.

The proposed development presents an opportunity to provide a formal streetscape to identify the village on approach from St Agnes



North East Approach >

Village only obvious in distant view.

Only speed restriction signage denotes approach to village



< South West Approach

Initially only village and speed restriction signage denotes approach to Mount Hawke.

Initial dwellings suggestive of village setting.

Crossroads, signage and dwellings direct towards village centre.



^ South East Approach

Initially only village and speed restriction signage denotes approach to Mount Hawke.

Dwellings suggestive of village settings - modest bungalows not obvious to frontage.



North - Penhall Lane



West - Penhall Lane

ANALYSIS OF VIEWS OF THE SITE

The site is well screened from public view to the north, west and south by the topography of the area, existing structures and well established hedgerows, which will be retained and protected.

The eastern approach is the most visible edge of the site and this presents an opportunity to strengthen the village entrance.



Northeast - From St Agnes



Southern track

